



DESIGN DATA FORM - FIG 2a

LIQUIP INTERNATIONAL PTY LTD

13 HUME ROAD SMITHFIELD SYDNEY NSW AUSTRALIA 2164
 Ph: +61 2 9725 9000 Fax: +61 2 9725 1252 INTERNET: www.liquip.com

MK3 BOTTOM LOADING ARM NEW & RETROFITS

JOB DETAILS

CUSTOMER _____ DEL. ADDRESS _____ DEL. DATE _____

SITE MEASURED Y / N BY _____

ASSY DWG. No. _____

ASSY DWG CHKD BY _____

No. OF ARMS REQUIRED _____

MATERIAL & SIZE _____

PRODUCTS TO BE LOADED _____

PAINT COLOUR _____

DESIGN INFORMATION

RISER PIPE FLANGE HEIGHTS
(in millimetres or inches)

1ST ARM	2850mm	112.2"
2ND ARM	_____	_____
3RD ARM	_____	_____
4TH ARM	_____	_____
5TH ARM	_____	_____
6TH ARM	_____	_____

(100mm / 4" ANSI 150 RF FLANGE)

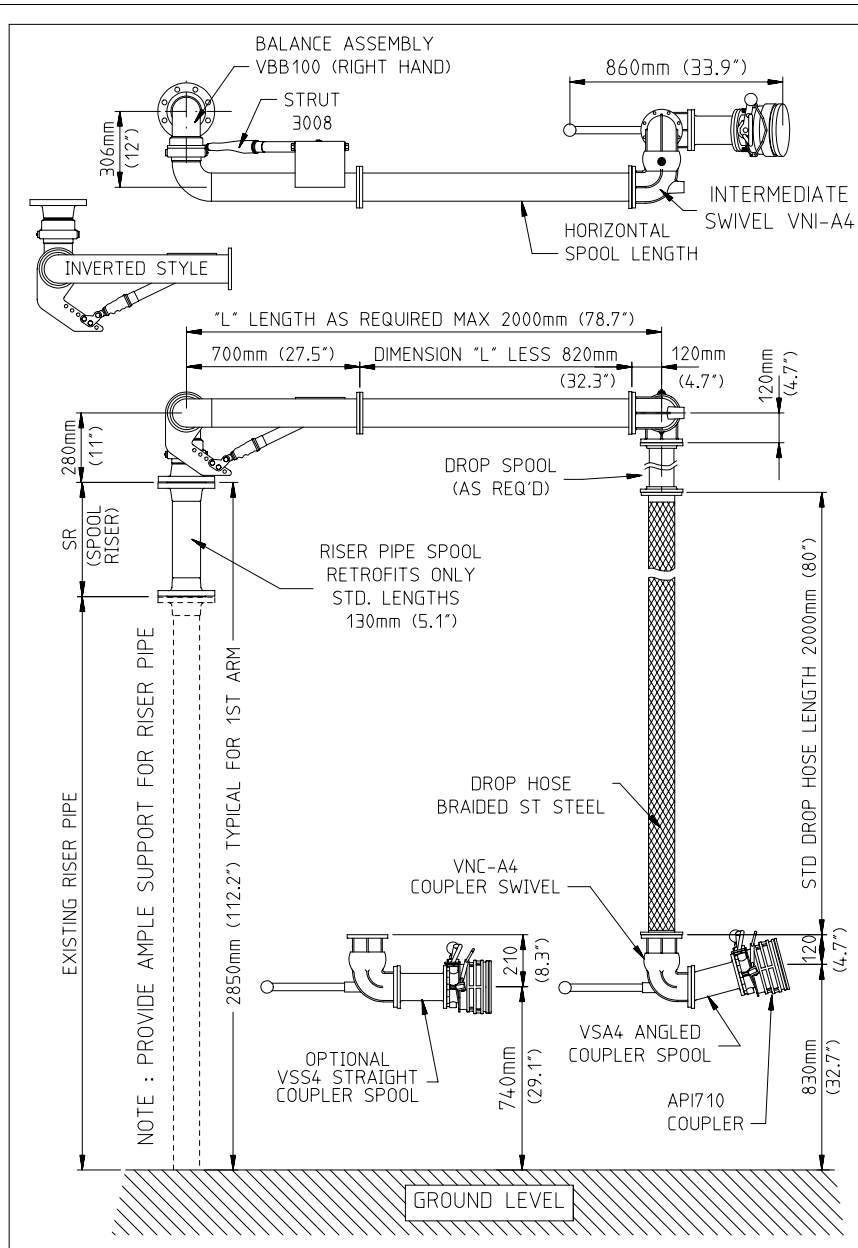
LOADING ARM ORIENTATION

ASSEMBLY INFORMATION FOR BALANCE

RIGHT HAND LEFT HAND
(AS SHOWN)

STANDARD INLET INVERTED INLET
(AS SHOWN)

WORKING SPACE/ADDITIONAL INFORMATION



CHECKLIST

PART No.	DRAWING No.	DESCRIPTION	1	2	3	4	5	6
4235	P4235	GASKET ANSI 150						
L217	L1373-1	RISER SPOOL						
VBB100MMV	V26998	BALANCE ASSEMBLY						
L219	L1373-1	HORIZONTAL SPOOL "L"=						
VNC-A4	V85096	COUPLER SWIVEL ASSY						
API710	A99406	DRYBREAK COUPLER						
5639P	P5639	DROP HOSE ST STEEL						
VNI-A4	V856	INTERMEDIATE SWIVEL						
---	---	TTMA GASKET KIT						
---	---	ANSI 150 GASKET KIT						
OPTIONAL								
L220A	L1373-1	DROP SPOOL						
VSA4	V1101	15° ANGLED COUPLER SPOOL						
VSS4	V1102	STRAIGHT COUPLER SPOOL						

- TTMA GASKET KIT**
- 1 x 4248 GASKET KLINGERITE
 - 8 x 6745 BOLT M10
 - 8 x 6744 NUT M10
 - 8 x 5261 SPRING WASHER M10
 - 16x 5288 FLAT WASHER M10
- ANSI 150 GASKET KIT**
- 1 x 4235 GASKET KLINGERITE
 - 8 x 4892 STUD 5/8" UNCx3-1/2" B7
 - C/W 2 OFF NUTS 5/8" UNC 2H
- OPTIONAL EXTRAS**
- PARKING ADAPTORS PA100
HOSE COVERS
-
-
-