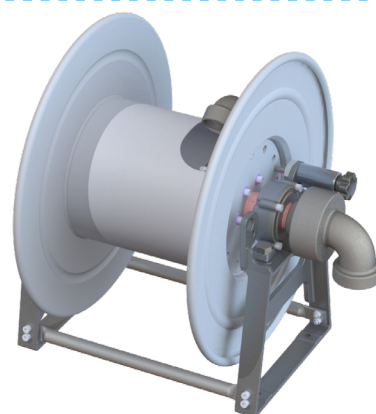


R-Series Lightweight Hosereels - LPG SPEC

Liquip's all new R-Series drum style LPG hosereels provide the perfect balance of strength and reduced weight to allow for increased delivery efficiency and safety.

Liquip hosereels are designed for tough conditions and the R-Series is no exception. Beyond incorporating Liquip's proven technologies that work flawlessly in high pressure applications, the RxxxHPLPG incorporates the popular Full Circle Swivel inlet design. The RxxxHPLPG withstands the harshest operating environments, offering exceptional quality and usability.

Featuring an all new stainless steel manifold, aluminium base frame, drum and cheek plates, it's clear that no stone has been left unturned during the development of the R-Series reel.



R310HPLPG shown

Features & Benefits

- Lightweight design for increased payload capacity.
- 38mm flow path throughout.
- The stainless steel NPT manifold and 1½" NPT gooseneck allows for LPG product compatibility.
- The aluminium exterior eliminates the need for additional painting or coatings.
- Manifold, shafts and seal components can be easily accessed from the outside providing ease of service and maintenance.
- R-series LPG Spec Hosereels can be manually, hydraulically or pneumatically operated.
- Liquip's pneumatic motor can be effectively operated using Liquip's control valve (P/N -9953).
- Mounting positions allow for easy retrofitting when replacing prior Liquip HR,FR and AR series hosereels.
- A range of drum lengths available with the same hose capacity as their predecessors.
- Left or Right hand configurable to ensure flexibility during installation.
- Supplied as standard with an anti-rotation lock to prevent hose unravelling.
- All reels are Australian made and supported through Liquip's distribution network.
- Standard Gooseneck is 1½" NPT.
- Standard Swivel inlet is 1½" FNPT LPG FC.

Technical Information

Base Hosereel	
Max allowable working pressure	2100 kPa
Periodic Service	Annually - check O-rings and replace as required.
Mounting	4 x M10 Bolts - see mounting footprint on following pages. 38mm (1½") NPT Gooseneck
Inlet and Outlet	1½" FNPT LPG FC Swivel Inlet, 90 Degree Swivel with Tri-directional movements of the seal ring.
Rewind Options	Manual Hydraulic Pneumatic (air)
Drum widths and weights (less motors)	310mm (12") - 19kg 460mm (18") - 20kg 610mm (24") - 21kg
Materials	Stainless steel 304 manifold, Steel gooseneck and FC swivel -Aluminium cheek plates and drum. -Nitrile seals.

Pneumatic Motor	
Max Pressure	620 kPa (6.2 Bar/90 psi)
Min Pressure	400 kPa (4 Bar/60 psi)
Hosereel Speed	56 RPM - AR310HPLPG 61 RPM - AR460HPLPG / AR610HPLPG
Air Tank Size	200 litres
Max Air Consumption	1100 (NI/min) at 620 kPa - AR310HPLPG 1,600 (NI/min) at 620kPa - AR460HPLPG / AR610HPLPG
Hydraulic Motor	
Max Inlet Pressure	17,500 kPa (175bar/2,538 psi)
Max Fluid Flowrate	60 LPM
FT1251538 Flow Control Valve	210 Bar Working Pressure 30 LPM Recommended Max Flow Rate
5412 Hydraulic Control Valve	4 Spool only, 45 LPM rated flow
Manual Rewind	
Winding Force Requirement	15 kg (force)

Ordering Information

Configurations and example part number

Rewind Mechanism

AR = Pneumatic rewind

Motor included. Control sold separately

FR = Manual rewind

Rewind handle included.

HR = Hydraulic rewind

Motor included loose as a kit HRxxxHPLPGZ.

Control Valves sold separately

R = Hydraulic ready

Motor and Control sold separately

Width of reel

310 = 310mm (12")

460 = 460mm (18")

610 = 610mm (24")

AR 310 HPLPG

Reel Style

HP = High Pressure Drum c/w

1½" Gooseneck & 1½" FNPT LPG FC

Swivel Inlet

Associated Equipment

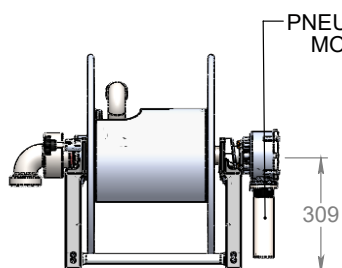
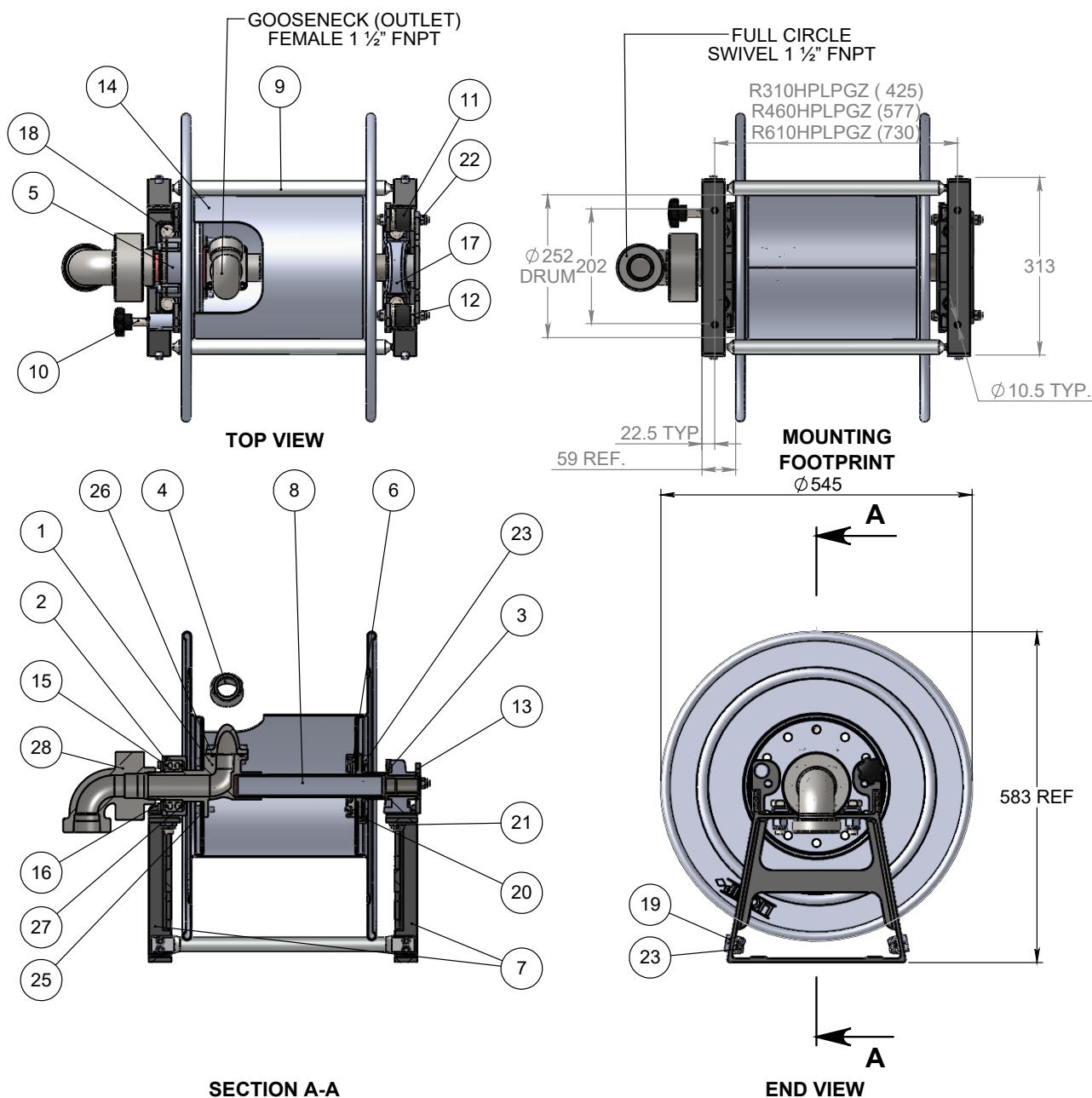
- **R-Series Hosereels- Standard:** RxxxHP
- **Cartwheel/Catherine Style Hosereels - Standard:** AHR250 series.
- **Aviation Drum style hosereels:** AHR250D series (suit 2" hoses).
- **Recommended hose:** Elaflex LPG delivery hose - EN1762.
- **Recommended swivels:** LIQSMAC-112LN 90 Degree FC swivels.
- **LPG nozzles:** Rego A7797A or Marshall Excelsior ME1075 Series.

Hosereel capacity in metres

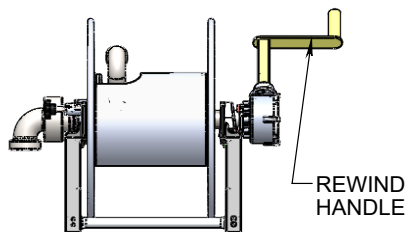
Hose Size (NB)	Beads	R310HP	R460HP	R610HP
¾"	no beads	62	93	137
1"	no beads (with beads)	39 (11)	64 (18)	88 (25)
1¼"	no beads (with beads)	24 (9)	35 (14)	53 (21)
1½"	no beads (with beads)	22 (4)	33 (5)	48 (8)

Category	Item	Description
Goosenecks	R310HP-4LPG	Gooseneck S/S - 1½" NPT
Pneumatic Rewind	5383	Pneumatic motor for AR310HP
	9950	Pneumatic motor for AR460HP and AR610HP
	R310HP-26	5383 Pneumatic motor with gearbox assembly to suit AR310HP series hosereels
	R310HP-26L	9950 Pneumatic motor with gearbox assembly to suit AR460HP/AR-610HP series hosereels
Hydraulic Rewind	1295	Hydraulic motor Danfoss
	5412	Hydraulic Control Valve (Motor Spool 2000psi Relief Spring Centered Detent to port A)
	FT1251538	Flow Control Valve 3/8 Adjustable
Manual Rewind	R310HP-31	Manual crank handle and gearbox assembly
	R310HP-34	Handle Assembly only

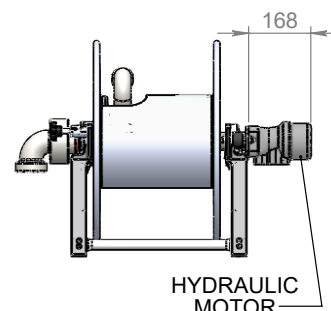
R- SERIES LPG LIGHTWEIGHT HIGH PRESSURE HOSEREEL



AR SERIES REEL
ARxxxHPLPG



FR SERIES REEL
FRxxxHPLPG



HR SERIES REEL
HRxxxHPLPGZ

R- SERIES LPG LIGHTWEIGHT HIGH PRESSURE HOSEREEL BOM

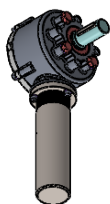
ITEM NO.	PART NUMBER	DESCRIPTION	R310HZ QTY.	R460HPZ QTY.	R610HPZ QTY.	MATERIAL
1	R310HP-24	MANIFOLD	1	1	1	ST STEEL
2	R310HP-25	BEARING FLANGE	1	1	1	ST STEEL
3	R310HP-3	INPUT SHAFT-FLANGE	1	1	1	ST STEEL
4	R310HP-4LPG	GOOSENECK	1	1	1	ST STEEL
5	R310HP-5	BEARING HOUSING	1	1	1	ALUMINIUM
6	R310HP-6	BACKING PLATE	1	1	1	ALUMINIUM
8	R310HP-7	A-FRAME SUPPORT	2	2	2	ALUMINIUM
8	R310HP-8	CONNECTING TUBE	1	-	-	ALUMINIUM
	R460HP-8	CONNECTING TUBE	-	1	-	ALUMINIUM
	R610HP-8	CONNECTING TUBE	-	-	1	ALUMINIUM
9	R310HP-9	TUBE (25 x 3 x I.D 19mm x 460mm)	2	-	-	ALUMINIUM
	R460HP-9	TUBE (25 x 3 x I.D 19mm x 615mm)	-	2	-	ALUMINIUM
	R610HP-9	TUBE (25 x 3 x I.D 19mm x 765mm)	-	-	2	ALUMINIUM
10	R310HP-12	LOCK PIN ASSEMBLY	1	1	1	SS & AL
17	R310HP-15	RUBBER MOUNT	2	2	2	STEEL, RUBBER
12	R310HP-16	SPACER	4	4	4	STAINLESS STEEL
13	R310HP-22	BRACKET MOTOR MOUNT	1	1	1	ST STEEL
14	R310HP-23	HOSEREEL DRUM	1	-	-	ALUMINIUM
	R460HP-23	HOSEREEL DRUM	-	1	-	ALUMINIUM
	R610HP-23	HOSEREEL DRUM	-	-	1	ALUMINIUM
15	5375	DOUBLE ROW BALL BEARING	1	1	1	STEEL
16	5376	EXTERNAL CIRCLIP	1	1	1	STEEL
18	6705	M16 X 50 Z/P	4	4	4	Z/P STEEL
19	4942	M8 X 25 SS	28	28	28	ST STEEL
20	6533	M6 X 20 SS	2	2	2	ST STEEL
21	55023	M16 NYLOC NUT	4	4	4	Z/P STEEL
22	4981	M10 NYLOC NUT	4	4	4	Z/P STEEL
23	6625	M8 NYLOC NUT	8	8	8	Z/P STEEL
24	5288	M10 WASHER Z/P	4	4	4	Z/P STEEL
25	6605	M8 WASHER SS	6	6	6	ST STEEL
26	5374	O-RING for R310HP-1	3	3	3	NBR
27	5378	O-RING for R310HP-5	1	1	1	NBR
28	SMAC-112LN	SWIVEL 1½" FNPT TO 1½" FNPT	1	1	1	STEEL
17	4637	BEARING & BLOCK	1	1	1	STEEL & IRON

R- SERIES LPG LIGHTWEIGHT HIGH PRESSURE HOSEREEL BOM

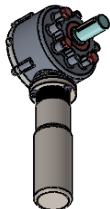
AR, FR & HR LPG SERIES LIGHTWEIGHT REEL ASSEMBLY

ITEM	PART #	R310HP QTY.	R460HP QTY.	R610HP QTY.	R310HP-26 QTY.	R310HP-26L QTY.	R310HP-31 QTY.	1295 QTY.
28	AR310HPLPG	1	-	-	1	-	-	-
	AR460HPLPG	-	1	-	-	1	-	-
	AR610HPLPG	-	-	1	-	1	-	-
29	FR310HPLPG	1	-	-	-	-	1	-
	FR460HPLPG	-	1	-	-	-	1	-
	FR610HPLPG	-	-	1	-	-	1	-
30	HR310HPLPGZ	1	-	-	-	-	-	1
	HR460HPLPGZ	-	1	-	-	-	-	1
	HR610HPLPGZ	-	-	1	-	-	-	1

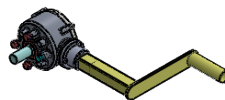
HOSEREEL SUB-ASSEMBLIES AND KEY SPARE PARTS



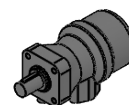
PNEUMATIC MOTOR & GEARBOX ASSEMBLY- SMALL
PART # : R310HP-26



PNEUMATIC MOTOR & GEARBOX ASSEMBLY- LARGE
PART # : R310HP-26L



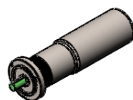
GEARBOX & REWIND HANDLE
PART # : R310HP-31
MANUAL REWIND ASSEMBLY



HYDRAULIC MOTOR
PART # : 1295



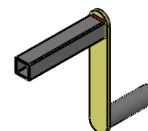
PART # : 5383
PNEUMATIC MOTOR SMALL



PART # : 9950
PNEUMATIC MOTOR LARGE



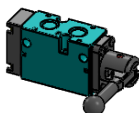
PART # : R310HP- 4LPG
GOOSENECK S/S 1 1/2" NPT



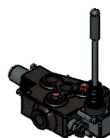
PART # : R310HP-34
MANUAL REWIND HANDLE ONLY



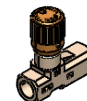
PART # : VITON SEAL KIT
5374V ORING VITON
5378V ORING VITON



PART # : 9953
VALVE PULL HANDLE LEVER/ DETENT PERP C/W FITTINGS



PART # : 5412
HYDRAULIC CONTROL VALVE (MOTOR SPOOL 2000PSI RELIEF SPRING CENTERED DETENT TO PORT A)



PART # : FT1251538
FLOW CONTROL VALVE 3/8 ADJUSTABLE